

TB 9-1801-4

WAR DEPARTMENT TECHNICAL BULLETIN

LOCATION AND INSTALLATION OF ORDNANCE MAINTENANCE SET "H" IN 2½-TON, 6 x 6 TRUCK, 144-INCH WOOD OR STEEL CARGO BODY (GMC)

*Ref: TM 9-1801, Ordnance Maintenance: Power Train, Chassis and Bodies for
2½-ton, 6 x 6 Truck (GMC, CCKW-353 and 352), 10 March 1944*

War Department, Washington 25, D. C., 6 November, 1944

1. DESCRIPTION.

a. The instructions contained herein are to be used as a guide to personnel charged with the installation of ordnance maintenance set "H" in 2½-ton, 6 x 6 truck, 144-inch wood cargo body (GMC). It is possible that the exact equipment as listed in figure 6 may not be issued. However, the instructions will be correct generally and in most instances can be followed exactly as described. (See ORD 6 SNL N-21 for composition of ordnance maintenance set "H.") Should a steel cargo body be provided instead of a wood cargo body, minor corrections will have to be made locally.

2. OPERATION.

a. Modification of Seat (Left Side).

(1) Cut seat slats 34³/₈ inches from front of truck (fig. 6). Raise the seat. Center reinforcing band B292563 (item 28, fig. 23) 33 inches from front and 12½ inches above floor of truck body (fig. 6).

(2) Mark position for drilling six holes; remove band, drill six 1¹/₃₂-inch holes and replace band. Fasten with six 5/16-18NC-2 x 1³/₄ hex-hd. cap screws, six 5/16 in. U.S. std. plain washers, six 5/16 in. reg. lock washers, and six 5/16 in. reg. nuts.

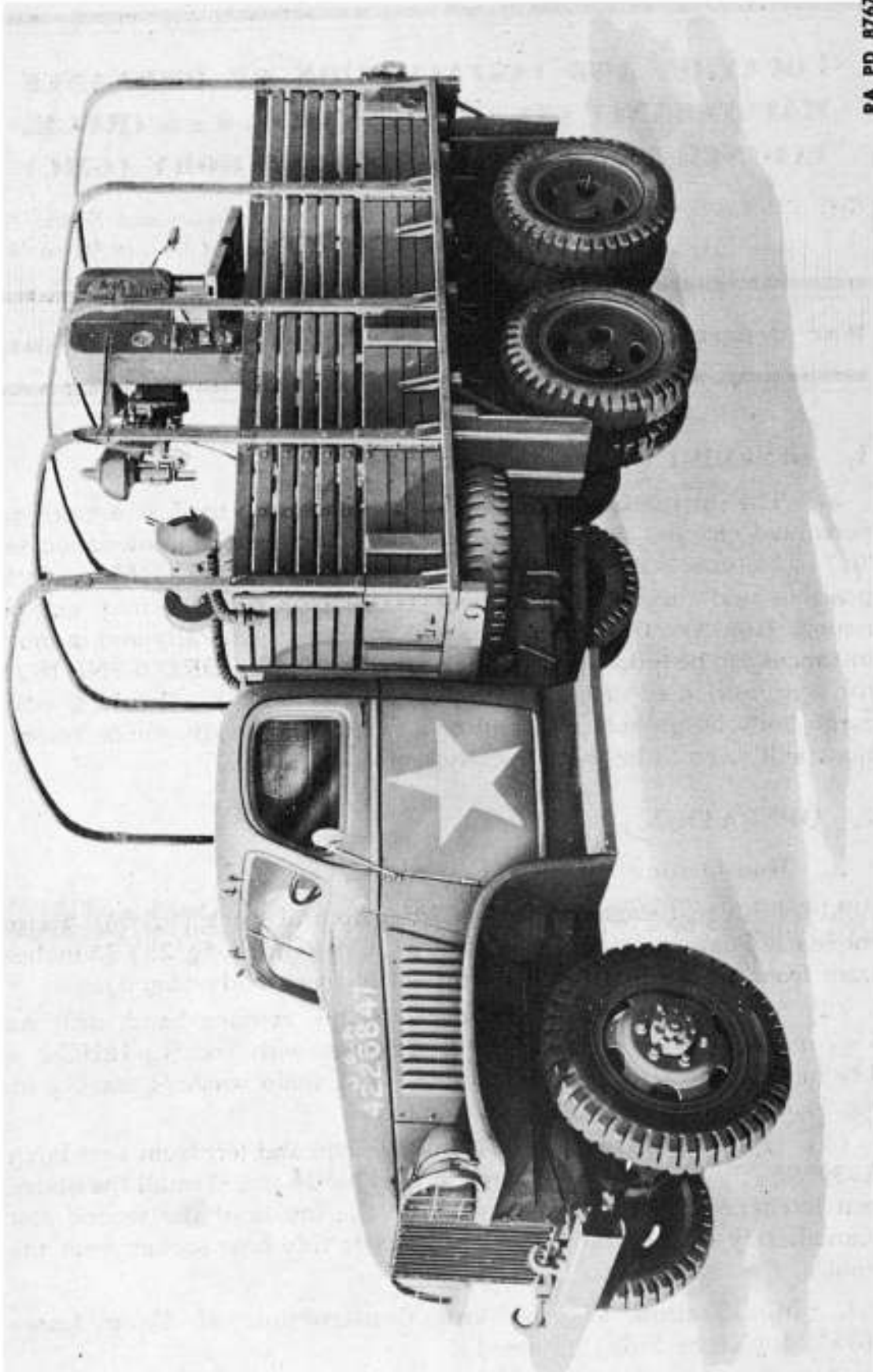
(3) Remove left front seat channel hinge and left front seat latch A339795 (fig. 23). Retain the recovered hardware. Install the above seat latch, complete with hardware, on the inside of the second slat immediately to the rear of the second left side bow socket from the front of the truck body.

b. Modification of Seat and Construction of Drop Gates D84794 (Right Side) (item 1).

(1) Remove the first, second, and fifth right seat channel hinges, counting from the front of the truck body. Retain the recovered hard-

TB 9-1801-4

WAR DEPARTMENT TECHNICAL BULLETIN



RA PD 87670

**Figure 1 — Three-quarter Front Left View of Truck With Bows Mounted —
Equipped With Ordnance Maintenance Set "H"**

TB 9-1801-4

WAR DEPARTMENT TECHNICAL BULLETIN

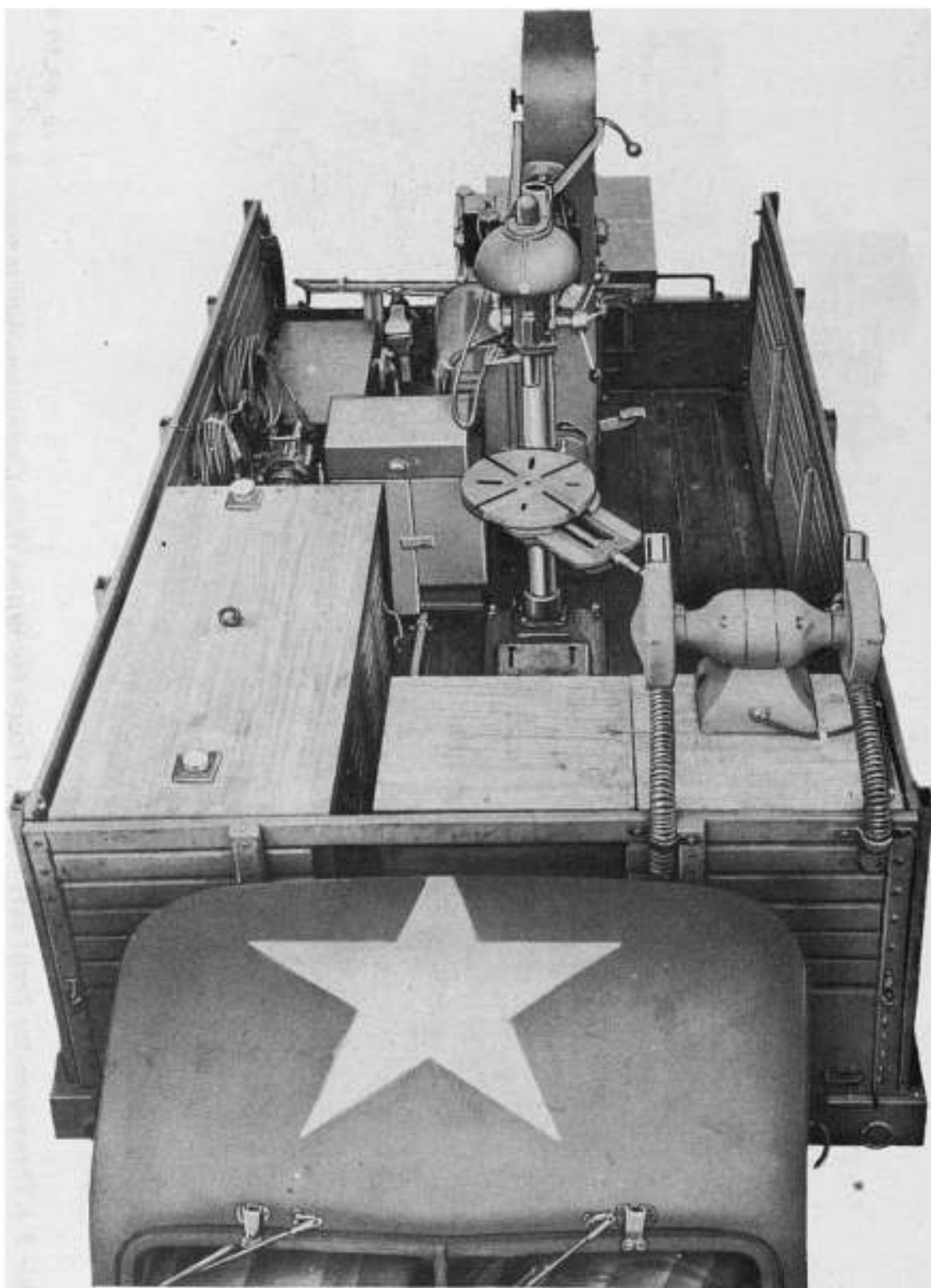


RA PD 87669

Figure 2 — Three-quarter Front Left View of Truck Equipped With Ordnance Maintenance Set "H"

TB 9-1801-4

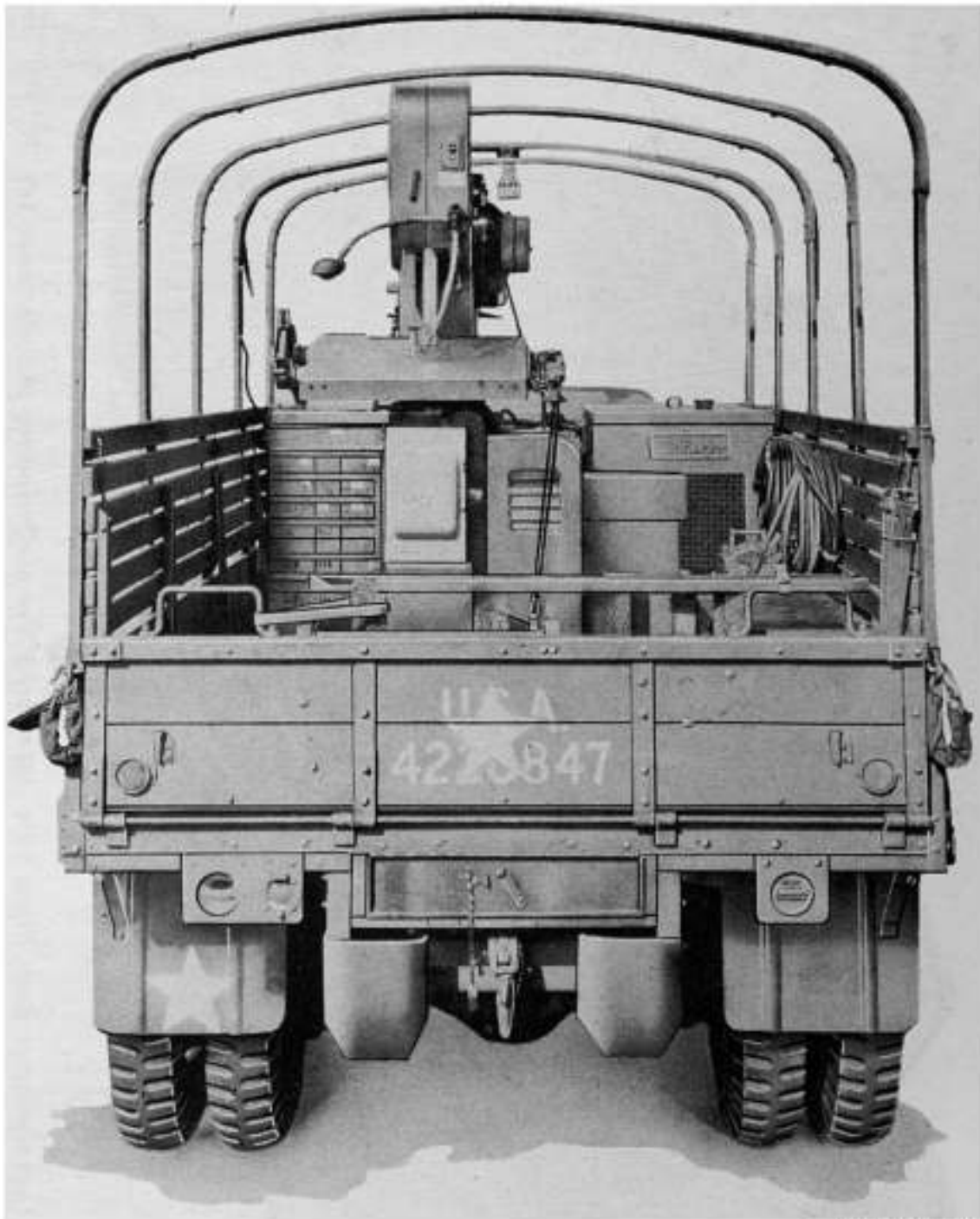
WAR DEPARTMENT TECHNICAL BULLETIN



RA PD 87672

Figure 3 — Semi-top, Front View of Truck Equipped With Ordnance Maintenance Set "H"

WAR DEPARTMENT TECHNICAL BULLETIN



RA PD 87673

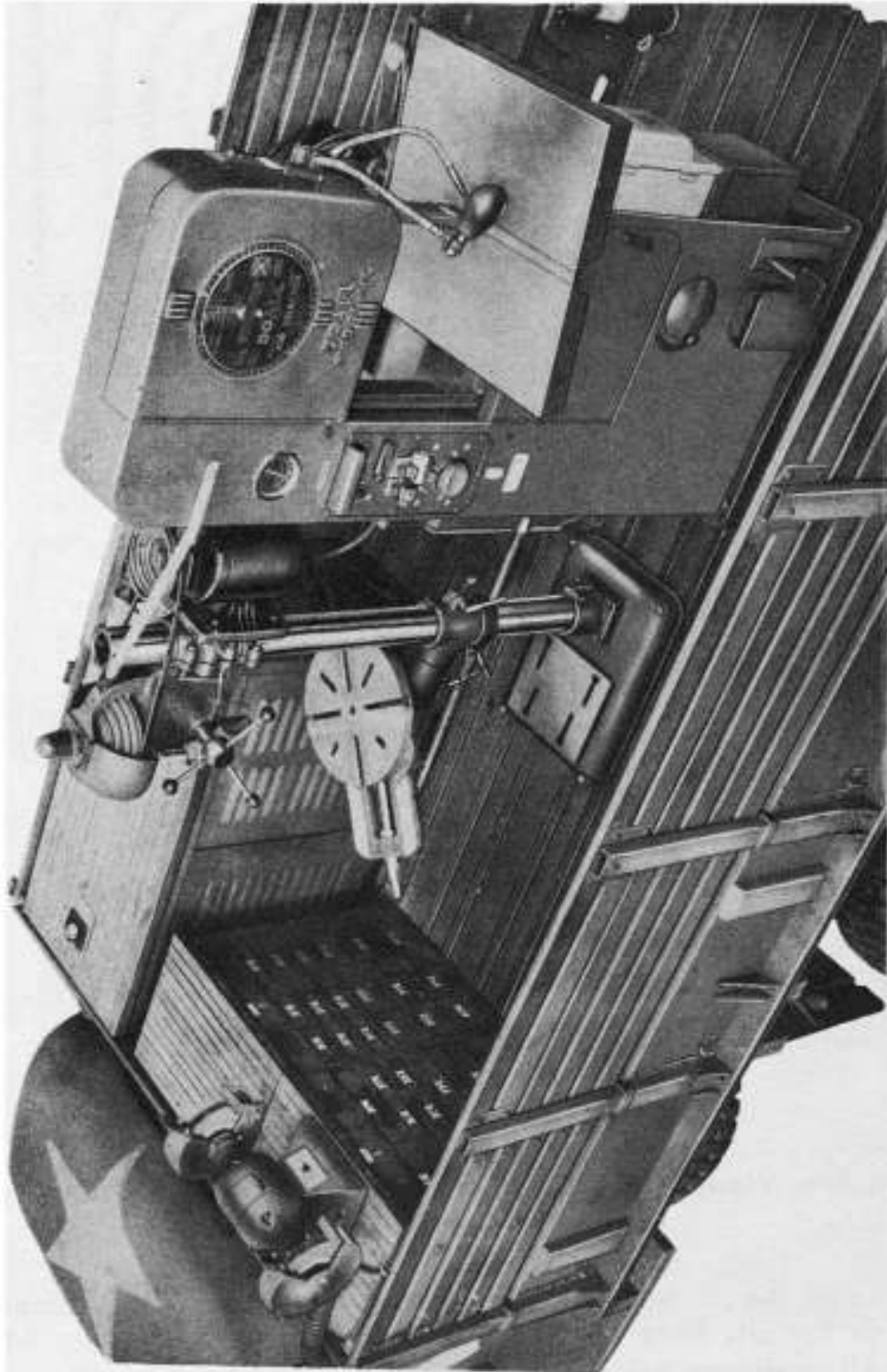
Figure 4 — Rear View, With Tail Up, of Truck Equipped With Ordnance Maintenance Set "H"

ware. Modify the above three channel hinges and the channel hinge taken from the left front of the truck body according to figure 10. **NOTE:** All references below to figure 6 pertain to figures 6a, 6b, and 6c, collectively. The single figure is used for the sake of brevity.

(2) Place the four modified channel hinges as shown in figures 11 and 12. Mark position for drilling twelve baseboard holes, remove

TB 9-1801-4

WAR DEPARTMENT TECHNICAL BULLETIN



RA PD 87671

Figure 5 — Semi-top, Three-quarter Rear Right Side (Interior) View of Ordnance Maintenance Set "H"

TB 9-1801-4**WAR DEPARTMENT TECHNICAL BULLETIN**

the four channel hinges, drill twelve $1\frac{1}{32}$ -inch holes and replace the four channel hinges. Fasten with twelve $\frac{5}{16}$ -18NC-2 x $1\frac{3}{4}$ hex-hd. cap screws, twelve $\frac{5}{16}$ in. reg. lock washers, twelve $\frac{5}{16}$ in. U.S. std. plain washers, and twelve $\frac{5}{16}$ in. reg. nuts.

(3) Raise the seat and the four channel hinges so that they are back to back. Mark position for drilling four holes on each channel hinge, with each drilling hole mark centered on one seat slat. Drill four $1\frac{1}{32}$ -inch holes as marked in each channel hinge. Place the four channel hinges against the seat slats and mark position for drilling four holes through each channel hinge on the seat slats. Lower the four channel hinges and drill four $1\frac{1}{32}$ -inch holes in each slat. Raise and fasten the four channel hinges to the slats with the sixteen $\frac{5}{16}$ -18NC-2 x $1\frac{3}{4}$ hex-hd. cap screws, sixteen $\frac{5}{16}$ in. reg. lock washers, sixteen $\frac{5}{16}$ in. U.S. std. plain washers, and sixteen $\frac{5}{16}$ in. reg. nuts originally recovered with the hinges.

(4) Saw the four seat slats at the four points shown in figure 11.

(5) Remove the two seat latches A339795 (fig. 23), complete with hardware, one from the front and one from the rear of the right side of the truck. Fasten the two latches, complete with hardware, as shown on figures 11 and 12.

(6) Replace the seat latch removed from the rear of the right side of the truck with $5\frac{1}{2}$ x 1 x $\frac{1}{4}$ in. hot roll steel seat retainer strap A339769 (item 67, fig. 23) as shown in figure 6. Place strap in a vertical position with the top hole over the hole left by the removed seat latch.

(7) Mark the position of the lower hole on the slat below, remove strap, drill one $1\frac{1}{32}$ -inch hole and replace the strap. Fasten with two $\frac{5}{16}$ -18NC-2 x $1\frac{3}{4}$ hex-hd. cap screws, two $\frac{5}{16}$ in. U.S. std. plain washers, two $\frac{5}{16}$ in. reg. lock washers, and two $\frac{5}{16}$ in. reg. nuts.

(8) Locate the second $5\frac{1}{2}$ x 1 x $\frac{1}{4}$ in. hot roll steel seat retainer strap A339769 (item 67, fig. 23) near the center bow socket on the inside of the right side of the truck body as shown in figure 6. Place the strap in a vertical position with one hole centered on the second slat from the top and the lower hole centered on the slat below.

(9) Mark position for drilling two holes, remove strap, drill two $1\frac{1}{32}$ -inch holes and replace the strap. Fasten with two $\frac{5}{16}$ -18NC-2 x $1\frac{3}{4}$ hex-hd. cap screws, two $\frac{5}{16}$ in. U.S. std. plain washers, two $\frac{5}{16}$ in. reg. lock washers, and two $\frac{5}{16}$ in. reg. nuts.

c. Mounting of Two Metal Frame, Class A, Type VIII, Cabinet Benches 41-B-440 (item 2, fig. 7).

(1) Remove all drawers.

(2) Locate the two cabinet benches in accordance with figures 6 and 7.

TB 9-1801-4

WAR DEPARTMENT TECHNICAL BULLETIN

ITEM	QUAN	NOMENCLATURE	ORD. DWS NO.	FED STOCK NO.	COMMENTS
TRUCK EQUIPMENT					
1	2	GATES, RIGHT SIDE	D-84724		MODIFICATION DRAWING ONLY
TOOLS & EQUIPMENT					
2	2	BENCH, CABINET, TYPE VII, CLASS A, METAL FRAME	D-84722 - D-84723 D-84729 - C-145701	41-B-440	
3	1	ATTACHMENTS, LATHE, BRAKE DRUM, WITH METAL BOX		40-A-171-50	FURNISHED W/ LATHE, BRAKE DRUM
4	1	BOX, METAL, ACCESSORIES, SAW, BAND METAL CUTTING			FURNISHED W/ SAW, BAND
5	1	BOX, CONTROL, WEATHERPROOF, TYPE II	D-84728	17-B-24086	
6	1	COMB. RTMENT, WOOD, ACCESSORIES, 16 IN. BAND SAW	D-84737	39-C-355-450	
7	2	CORDEXTENSION, 2 CONDUCTOR 16 GA., 25 FT., LONG		17-C-3508230	IN DRAWER OF BENCH, CABINET
8	2	CORDEXTENSION, 2 CONDUCTOR, 12 A W.G., 25 FT., LONG	C-145726	17-C-35081	
9	3	CORDEXTENSION, 2 CONDUCTOR, 12 A W.G., 50 FT., LONG	C-145726	17-C-35082	
10	1	COVER, CANVAS, FOR DRILL, PRESS & BAND SAW	C-145787	24-C-1153	NOT SHOWN ON DRAWING
11	1	COVER, CANVAS, FOR LATHE, BRAKE DRUM	C-145792		NOT SHOWN ON DRAWING
12	1	EXTINGUISHER, FIRE, CTC, CAPACITY 1QT, W/ BRACKET		58-E-202	
13	1	GENERATOR, A.C. PORTABLE, GAS-ENG-DRIVEN, 5 KW		17-G-1971-50	
14	1	GRINDER, ELEC., BENCH, JOX IN WHEELS, 110 VOLT, 60 CYCLES		40-G-144-5	
15	1	LADDER, STEP, STEEL	C-145712	41-L-158	
16	1	LATHE, BRAKE DRUM, UNIVERSAL, WITH TRACK ASSEMBLY		40-L-10	
17	2	OILER, HAND PUSH BOTTOM, STEEL CAP, 1/2 PT. SPOUT 4 IN. LONG		13-O-1530	
18	4	PLUGS, ATTACHMENT, DOUBLE, OUTLET	A-339681	17-P-3727	IN DRAWER OF BENCH, CABINET
19	4	PLUGS, ATTACHMENT, SINGLE, OUTLET	A-339701	17-P-3726	IN DRAWER OF BENCH, CABINET
20	1	PRESS, DRILL, ELEC., MOTOR DRIVEN, FLOOR TYPE		40-P-182-200	
21	1	TRACK ASSEMBLY			FURNISHED W/ LATHE, BRAKE DRUM
22	1	SAW, BAND, METAL CUTTING	B-292551	40-S-370	DWG. NO. PERTAINS TO MODIFICATION
23	1	WISE, MACHINISTS, BENCH, SWIVEL BASE, 4 INCHES		41-V-276	
24					
25					
26					
ASSEMBLY MATERIAL					
27	1	ASSEMBLY BRACINGS FOR DRILL, PRESS	C-145797		APPLY TO PRESS, DRILL
28	1	BAND, REINFORCING, SLATS, CARGO BODY	B-292563		KIT, ASSEMBLY MATERIAL
29	2	BOX, OUTLET, WITH CLAMPS			KIT, WIRING & FIXTURE
30	2	BUSHING, CONDUIT, 1 IN.			KIT, WIRING & FIXTURE
31	8 FT	CABLE, TWO CONDUCTOR, NO. 14 AWG, SOLID			KIT, WIRING & FIXTURE
32	1	CAP, ATTACHMENT, PLUG, PARALLEL, BLADES			KIT, WIRING & FIXTURE
33	2	CLAMP, OILER, HAND 1/2 PT. CAPACITY	B-292516	42-C-18640	KIT, ASSEMBLY MATERIAL
34	1	CLIP, EXHAUST PIPE	B-292556		KIT, ASSEMBLY MATERIAL
36	1	CLIP, FASTENING, TYPE I	B-292559		KIT, ASSEMBLY MATERIAL
36	1	CLIP, FASTENING, TYPE II	B-292560		KIT, ASSEMBLY MATERIAL
37	6 FT	CONDUIT, RIGID, GALVANIZED, 1 IN.			KIT, WIRING & FIXTURE
38	1	ELBOW, STRAIGHT, M190° PLAIN, BLACK, 1-1/4 IN.			KIT, HARDWARE MATERIAL
39	1	GUARD, LAMP, WIRE, WITH CLAMP			KIT, WIRING & FIXTURE
40	2	HOOK, CABLE, TYPE II	B-292566		KIT, ASSEMBLY MATERIAL
41	12	LOOP, FOOTMAN'S, 1 IN STRAP		34-L-1715-50	KIT, HARDWARE MATERIAL
42	3	LOOP, STRAP, CENTER BAR, 5, 1 IN			KIT, HARDWARE MATERIAL
43	1	NIPPLE, PIPE, S, STD, EXT-LONG, BLACK, 1-1/4 IN X 6 IN.			KIT, HARDWARE MATERIAL
44	1	NIPPLE, PIPE, S, STD, CLOSE, 1 IN X 1-1/2 IN.			KIT, WIRING & FIXTURE
45	1 SET	BU LIN, CANVAS, WATERPROOFED,	D-84801	24-P-22-50	TRUCK SIDE EXTENSIONS
46	10	PIN, ASSEMBLY, BOWS	B-292569		KIT, ASSEMBLY MATERIAL
47	1	PIPE, S, STD, BLACK, 1-1/4 IN X 63 IN.			KIT, HARDWARE MATERIAL
48	2	PLATE, BOLTING	A-339794		KIT, ASSEMBLY MATERIAL
49	1	PLATE, EXHAUST PIPE	A-339767		KIT, ASSEMBLY MATERIAL
50	1	PLATE, LEVELING, TYPE I FOR SAW, BAND	B-292557		KIT, ASSEMBLY MATERIAL
51	1	PLATE, LEVELING, TYPE II FOR SAW, BAND	B-292558		KIT, ASSEMBLY MATERIAL
52	2	PLATE, REINFORCING, FOR SAW, BAND	A-339768		KIT, ASSEMBLY MATERIAL
53	4	PLATE, RETAINER FOR BENCH, CABINET	A-339716		KIT, ASSEMBLY MATERIAL
54	1	RETAINER, ANGLE, A, PRESS, DRILL, TO SAW, BAND	B-292572		KIT, ASSEMBLY MATERIAL
55	1	RETAINER, ANGLE, B, PRESS, DRILL, TO SAW, BAND	B-292573		KIT, ASSEMBLY MATERIAL
56	1	RECEPTACLE, DUPLEX, 3 PRONG, TYPE II			KIT, WIRING & FIXTURE
57	1	RECEPTACLE, LAMP HOLDER, 250 WATTS, 250 VOLTS			KIT, WIRING & FIXTURE
58	2	SPACER, WOOD, METAL CONTROL BOX	A-339766		KIT, ASSEMBLY MATERIAL
59	1 SET	SPACER, WOOD, (SET OF 5) BRAKE DRUM, LATHE	B-292568		KIT, ASSEMBLY MATERIAL
60	2	STRAP, STEEL, 1 IN.			KIT, WIRING & FIXTURE
61	13	STRAP, TWO HOLE			KIT, WIRING & FIXTURE
62	2	STRAP, WEBBING, TYPE I, 20 IN. LONG	A-339711	27-S-9904-58	
63	1	STRAP, WEBBING, TYPE I, 25 IN. LONG	A-339711	27-S-9904-66	
64	5	STRAP, WEBBING, TYPE II, 10 IN. LONG	A-339712	27-S-9904-114	
65	2	STRAP, WEBBING, TYPE II, 15 IN. LONG	A-339713	27-S-9904-166	
66	3	STRAP, WEBBING, TYPE III, 40 IN. LONG	A-339713	27-S-9904-163	
67	2	STRAP, SEAT RETAINER	A-339769		KIT, ASSEMBLY MATERIAL
68	1	SUPPORT, ANGLE, GENERATOR	B-292592		KIT, ASSEMBLY MATERIAL
69	2	SUPPORT, ANGLE, TYPE "A" FOR PRESS, DRILL	B-292562		KIT, ASSEMBLY MATERIAL
70	1	SUPPORT, ANGLE, TYPE "B" FOR SAW, BAND	C-145789		KIT, ASSEMBLY MATERIAL
71	1	SUPPORT, LADDER	D-84791		KIT, ASSEMBLY MATERIAL
72	1	SWITCH, TWO POLE, DOUBLE THROW, 60 AMPS, 250 VOLTS			KIT, ASSEMBLY MATERIAL
73	2	TUBING, FLEXIBLE, STEEL, UNPAKED, GALVANIZED			KIT, HARDWARE MATERIAL
74	4	CLAMP, M1 - 3/4 IN.			KIT, WIRING & FIXTURE

RA PD 87679

Figure 6A - Listing for Ordnance Maintenance Set "H"

TB 9-1801-4

WAR DEPARTMENT TECHNICAL BULLETIN

ASSEMBLY HARDWARE PER UNIT	
ASSEMBLY BRACING FOR PRESS DRILL	
2 EA	BOLT, SQ-HD, UNFIN, S, 5/8-11NC-1X5-1/2 W/LOCK WASHER & NUT
2 EA	BOLT, CARRIAGE, SQ-HD, S, 1/2-13NC-2X1-3/4 W/LOCK WASHER & NUT
BAND, REINFORCING	
6 EA	SCREW, CAP, HEX-HD, S, 1/6-18NC-2X1-3/4 W/LOCK & PLAIN WASHER & NUT
BENCH, CABINET	
4 EA	BOLT, HEX-HD, UNFIN, S, 3/8-13NC-2X2 W/LOCK WASHER & NUT
6 EA	BOLT, HEX-HD, S-FIN, ALLOY S, 3/8-16NC-2X2-1/2 W/LOCK & PLAIN WASHER & NUT
NOTE: THE TWO ADJACENT BENCHES ARE TO BE BOLTED TOGETHER	
ATTACHMENTS WITH BOX	
4 EA	SCREW, MACH, RD-HD, S, 3/8-16NC-2X2-3/4 W/LOCK & PLAIN WASHER & NUT
BOX, CONTROL	
4 EA	SCREW, MACH, RD-HD, S, 1/4-20NC-2X1-1/4 W/LOCK & PLAIN WASHER & NUT
BOX, OUTLET	
4 EA	SCREW, WOOD, RH-HD, S, 3/4 X NO. 12
BOX, METAL, ACCESSORIES, SAW, BAD	
4 EA	SCREW, CAP, HEX-HD, S, 5/16-18NC-2X1-1/4 W/LOCK & PLAIN WASHER & NUT
CLIP FASTENING, TYPE 1011	
4 EA	SCREW, CAP, HEX-HD, S, 5/16-18NC-2X2-1/2 W/LOCK & PLAIN WASHER & NUT
GLAMPOLLER, HAND	
8 EA	SCREW, WOOD, RD-HD, S, 3/4 X NO. 10
COMPARTMENT, WOOD	
4 EA	BOLT, CARRIAGE, SQ-NK, S, 3/8-16NC-2X5 W/LOCK & PLAIN WASHER & NUT
EXTINGUISHER, FIRE, BRACKET	
6 EA	SCREW, MACH, RD-HD, S, 1/4-20NC-2X3-1/4 W/LOCK & PLAIN WASHER & NUT
GATES, RIGHT, SIDE	
12 EA	SCREW, CAP, HEX-HD, S, 5/16-18NC-2X1-3/4 W/LOCK & PLAIN WASHER & NUT
GENERATOR	
2 EA	BOLT, SQ-HD, UNFIN, S, 1/2-13NC-1X3 W/LOCK WASHER & NUT
2 EA	BOLT, SQ-HD, UNFIN, S, 1/2-13NC-1X6-1/2 W/LOCK WASHER & NUT
2 EA	BOLT, SQ-HD, UNFIN, S, 1/2-13NC-1X8-1/2 W/LOCK WASHER & NUT
GRINDER	
2 EA	BOLT, CARRIAGE, SQ-NK, S, 3/8-16NC-2X3-1/2 W/LOCK WASHER & NUT
HOOK, CABLE	
4 EA	SCREW, MACH, RD-HD, S, 1/4-20NC-2X2-1/4 W/LOCK WASHER & NUT
LOOP, FOOTMANS' FOR LADDER	
4 EA	SCREW, MACH, RD-HD, S, 1/4-20NC-2X2 W/LOCK WASHER & NUT
LOOP, FOOTMANS' FOR TRACK ASSEMBLY	
4 EA	SCREW, CAP, FL-HD, S, 1/4-20NC-2X2-1/4 W/LOCK & PLAIN WASHER & NUT
4 EA	SCREW, MACH, RD-HD, S, 1/4-20NC-2X1-3/4 W/LOCK & PLAIN WASHER & NUT
PLATE, EXHAUST PIPE	
4 EA	SCREW, WOOD, RD-HD, S, 1-1/4 X NO. 11
PIN, ASSEMBLY	
10 EA	SCREW, WOOD, RD-HD, S, 3/4 X NO. 5
PRESS DRILL	
4 EA	BOLT, SQ-HD, UNFIN, S, 5/8-11NC-1X5-1/2 W/LOCK WASHER & NUT
4 EA	SCREW, HEX-HD, CAP, S, 1/2-13NC-2X3-1/4 W/LOCK & PLAIN WASHER & NUT
RETAINER ANGLES, ABB	
4 EA	SCREW, CAP, HEX-HD, S, 3/8-16NC-2X3-1/4 W/LOCK WASHER & NUT
2 EA	SCREW, CAP, HEX-HD, S, 3/8-16NC-2X2 W/LOCK PLAIN WASHER & NUT
SAW, BAND, METAL	
4 EA	BOLT, HEX-HD, S-FIN, ALLOY S, 1/2-13NC-2X3-1/4 W/LOCK & PLAIN WASHER & NUT
2 EA	BOLT, SQ-HD, UNFIN, S, 5/8-11NC-1X5 W/LOCK WASHER & NUT
4 EA	BOLT, SQ-HD, UNFIN, S, 5/8-11NC-1X10 W/LOCK WASHER & NUT
4 EA	BOLT, LAG, GIM. PT. CUT THREAD, UNFIN, 1/4 X 1-1/2
1 EA	BOLT, SQ-HD, UNFIN, S, 5/8-11NC-1X9-1/2 W/LOCK & PLAIN WASHER & NUT
SPACER, WOOD-LATHE, BRAKE DRUM	
18 EA	SCREW, CAP, HEX-HD, S, 1/4-20NC-2X4 W/LOCK & PLAIN WASHER & NUT
STRAP, SEAT, RETAINER	
4 EA	SCREW, CAP, HEX-HD, S, 5/16-18NC-2X1-3/4 W/LOCK & PLAIN WASHER & NUT
STRAP	
4 EA	SCREW, WOOD, RD-HD, S, 1X NO. 10
26 EA	SCREW, WOOD, RD-HD, S, 3/4 X NO. 8
4 EA	SCREW, SELF-TAPPING, RD-HD, S, NO. 6-23NC-2X1-1/2
SUPPORT, LADDER	
2 EA	SCREW, CAP, HEX-HD, S, 3/8-16NC-2X2-1/4 W/LOCK & PLAIN WASHER & NUT
2 EA	SCREW, CAP, HEX-HD, S, 3/8-16NC-2X3-1/4 W/LOCK & PLAIN WASHER & NUT
SWITCH, TWO POLE, DOUBLE THROW	
4 EA	SCREW, MACH, RD-HD, S, 1/4-20NC-2X1-1/4 W/LOCK & PLAIN WASHER & NUT
VISE, MACHINISTS	
1 EA	SCREW, CAP, HEX-HD, S, 1/2-13NC-2X3-1/4 W/LOCK & PLAIN WASHER & NUT
2 EA	BOLT, CARRIAGE, SQ-NK, S, 1/2-13NC-2X3-1/4 W/LOCK & PLAIN WASHER & NUT

RA PD 88046

Figure 6C — Assembly Hardware for Ordnance Maintenance Set "H"

WAR DEPARTMENT TECHNICAL BULLETIN

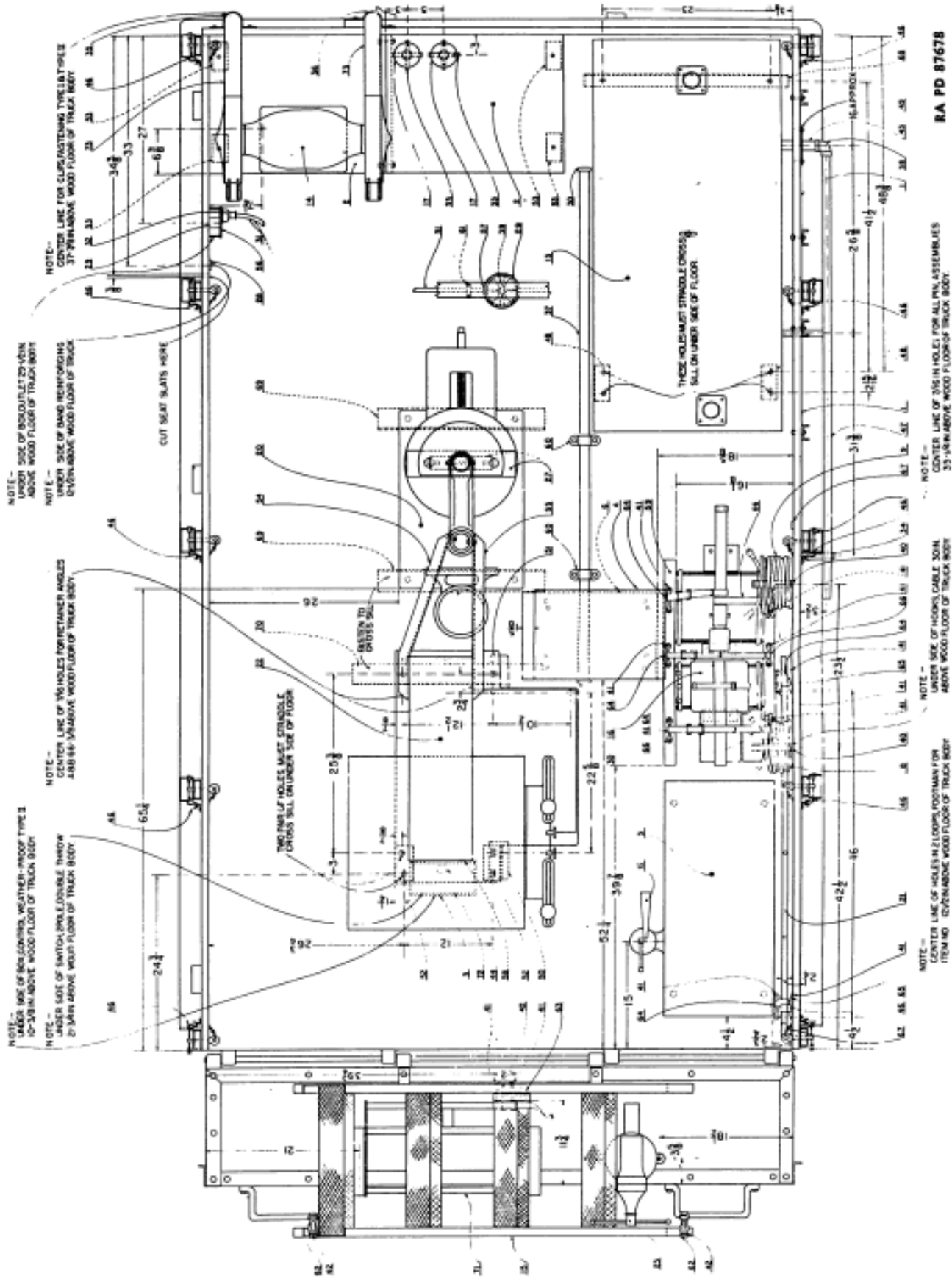


Figure 6B - Layout for Ordnance Maintenance Set "H" Mounted on 2 1/2-ton, 6 x 6, 144-inch Wood Cargo Body